

ATTACHMENT 1

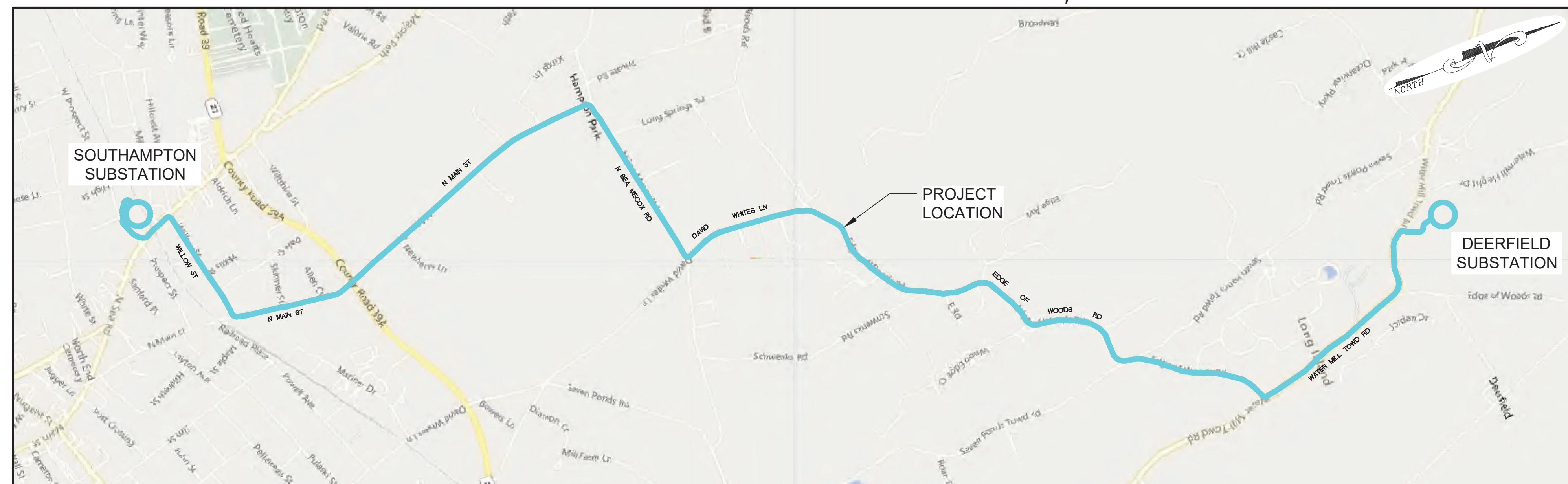
EROSION CONTROL PLANS

EROSION CONTROL PLAN

FOR

SOUTHAMPTON SUBSTATION TO DEERFIELD SUBSTATION

SOUTHAMPTON TO DEERFIELD, NEW YORK



KEY MAP

NTS

INDEX

<u>SHEET No.</u>	<u>DWG No.</u>	<u>DESCRIPTION</u>
1	COV-1	TITLE, KEY MAP, INDEX
2	DET-1	EROSION CONTROL DETAILS - 1
3	DET-2	EROSION CONTROL DETAILS - 2
4	OP - 1	OVERALL PLAN
5-6	ECS-1 TO ECS-2	EROSION CONTROL SUBSTATION
7-27	ECP-1 TO ECP-21	EROSION CONTROL PLAN - (1 TO 21)

IT IS A VIOLATION OF NEW YORK STATE EDUCATION LAW ARTICLE 145, PROFESSIONAL ENGINEERING AND LAND SURVEYING, SECTION 7209 FOR ANY PERSON, UNLESS HE IS ACTING UNDER THE DIRECTION OF A LICENSED PROFESSIONAL ENGINEER OR LAND SURVEYOR, TO ALTER AN ITEM IN ANY WAY. IF AN ITEM BEARING THE SEAL OF AN ENGINEER OR LAND SURVEYOR IS ALTERED, THE ALTERING ENGINEER OR LAND SURVEYOR SHALL AFFIX TO THE ITEM HIS SEAL AND THE NOTATION "ALTERED BY" FOLLOWED BY HIS SIGNATURE AND THE DATE OF SUCH ALTERATION, AND A SPECIFIC DESCRIPTION OF THE ALTERATION.

CONSULTANT:



NELSON + POPE

engineers • architects • surveyors

70 Maxess Road, Melville, NY 11747 • 631.427.5665 • nelsonpope.com

CLIENT:

PSEG LONG ISLAND
175 E OLD COUNTRY ROAD
HICKSVILLE, NY 11801

OWN BY:

CHK'D BY:

DATE: _____

JOB No.: 23033

CADD: COV

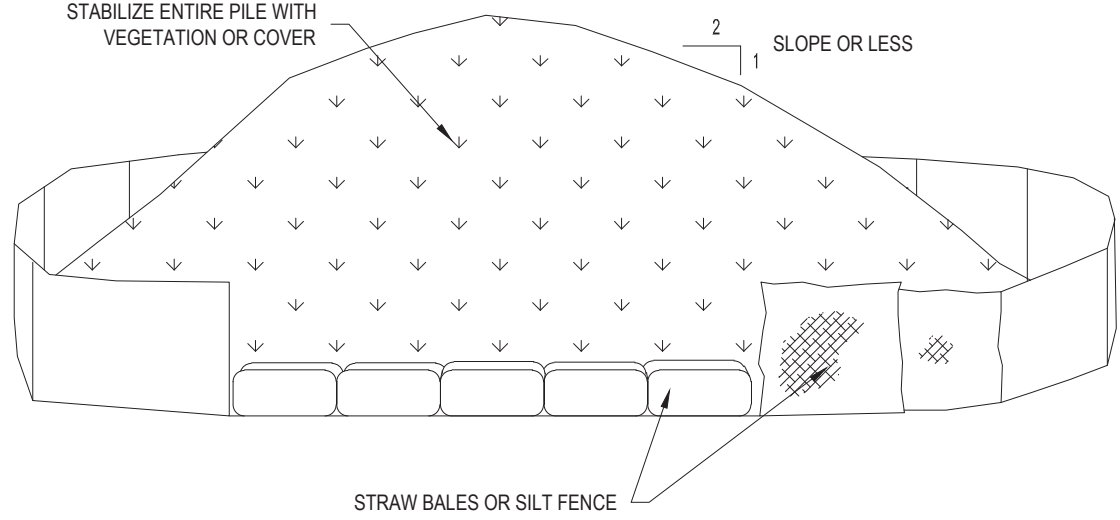
SCALE:

DRAWING NUMBER:

					DSD	DRAWING NUMBER:
I	SEPT. 2025		REVISED PER CLIENT'S COMMENTS DATED: 09/25/25		DSD	
No.	DATE		REVISION		BY:	SHEET:

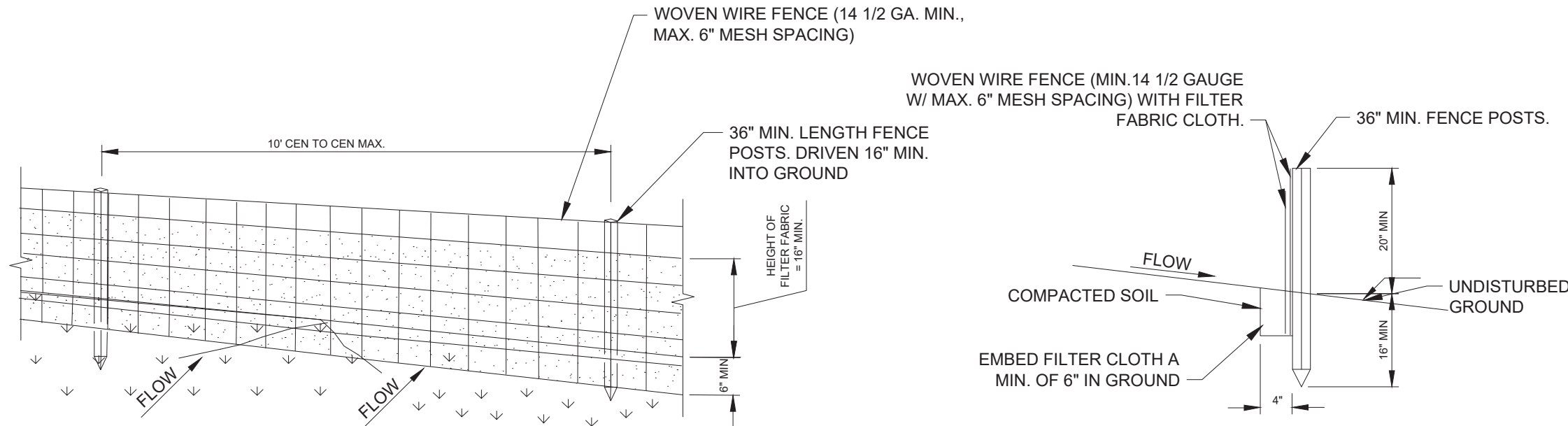
NOTES:

1. AREA CHOSEN FOR STOCKPILING OPERATIONS SHALL BE DRY AND STABLE. LOCATE AWAY FROM ALL DRAINAGE SYSTEMS.
2. MAXIMUM SLOPE OF STOCKPILE SHALL BE 2:1.
3. UPON COMPLETION OF SOIL STOCKPILING, EACH PILE SHALL BE SURROUNDED WITH EITHER SILT FENCING OR STRAW BALES, THEN STABILIZED WITH VEGETATION OR COVERED. PERIMETER PROTECTION SHALL BE A MINIMUM OF 2-FEET FROM THE TOE OF SLOPE.
4. WHEN SOIL STOCKPILE ACTIVITY HAS TEMPORARILY OR PERMANENTLY CEASED, THE APPLICATION OF SOIL STABILIZATION MEASURES MUST BE INITIATED BY THE END OF THE NEXT BUSINESS DAY AND COMPLETED WITHIN FOURTEEN (14) DAYS FROM THE DATE THE CURRENT SOIL DISTURBANCE ACTIVITY CEASED.



TO BE USED WHERE TEMPORARY SOIL STOCKPILES ARE BUILT AS A RESULT OF LAND DISTURBANCE ACTIVITIES OR WHERE TOPSOIL IS NECESSARY FOR REGRADING AND VEGETATING DISTURBED AREAS. TEMPORARY STOCKPILE STABILIZATION MEASURES INCLUDE VEGETATIVE COVER, MULCH, NONVEGETATIVE COVER, AND PERIPHERAL SEDIMENT TRAPPING BARRIERS. THE STABILIZATION MEASURE(S) SELECTED SHOULD BE APPROPRIATE FOR THE TIME OF YEAR, SITE CONDITIONS, AND REQUIRED PERIOD OF USE.

SOIL STOCKPILE



PERSPECTIVE VIEW

SILT FENCE DETAIL

CONSTRUCTION SPECIFICATIONS

1. WOVEN WIRE FENCE TO BE FASTENED SECURELY TO FENCE POSTS WITH WIRE TIES OR STAPLES. POSTS SHALL BE STEEL EITHER "T" OR "U" TYPE OR HARDWOOD.
2. FILTER CLOTH TO BE TO BE FASTENED SECURELY TO WOVEN WIRE FENCE WITH TIES SPACED EVERY 24" AT TOP AND MID SECTION. FENCE SHALL BE WOVEN WIRE, 6" MAXIMUM MESH OPENING.
3. WHEN TWO SECTIONS OF FILTER CLOTH ADJOIN EACH OTHER THEY SHALL BE OVERLAPPED BY SIX INCHES AND FOLDED. FILTER CLOTH SHALL BE EITHER FILTER X, MIRAFI 100X, STABILINKA T140N, OR APPROVED EQUIVALENT.
4. PREFABRICATED UNITS SHALL BE GEOFAB, ENVIROFENCE, OR APPROVED EQUIVALENT.
5. MAINTENANCE SHALL BE PERFORMED AS NEEDED AND MATERIAL REMOVED WHEN "BULGES" DEVELOP IN THE SILT FENCE.

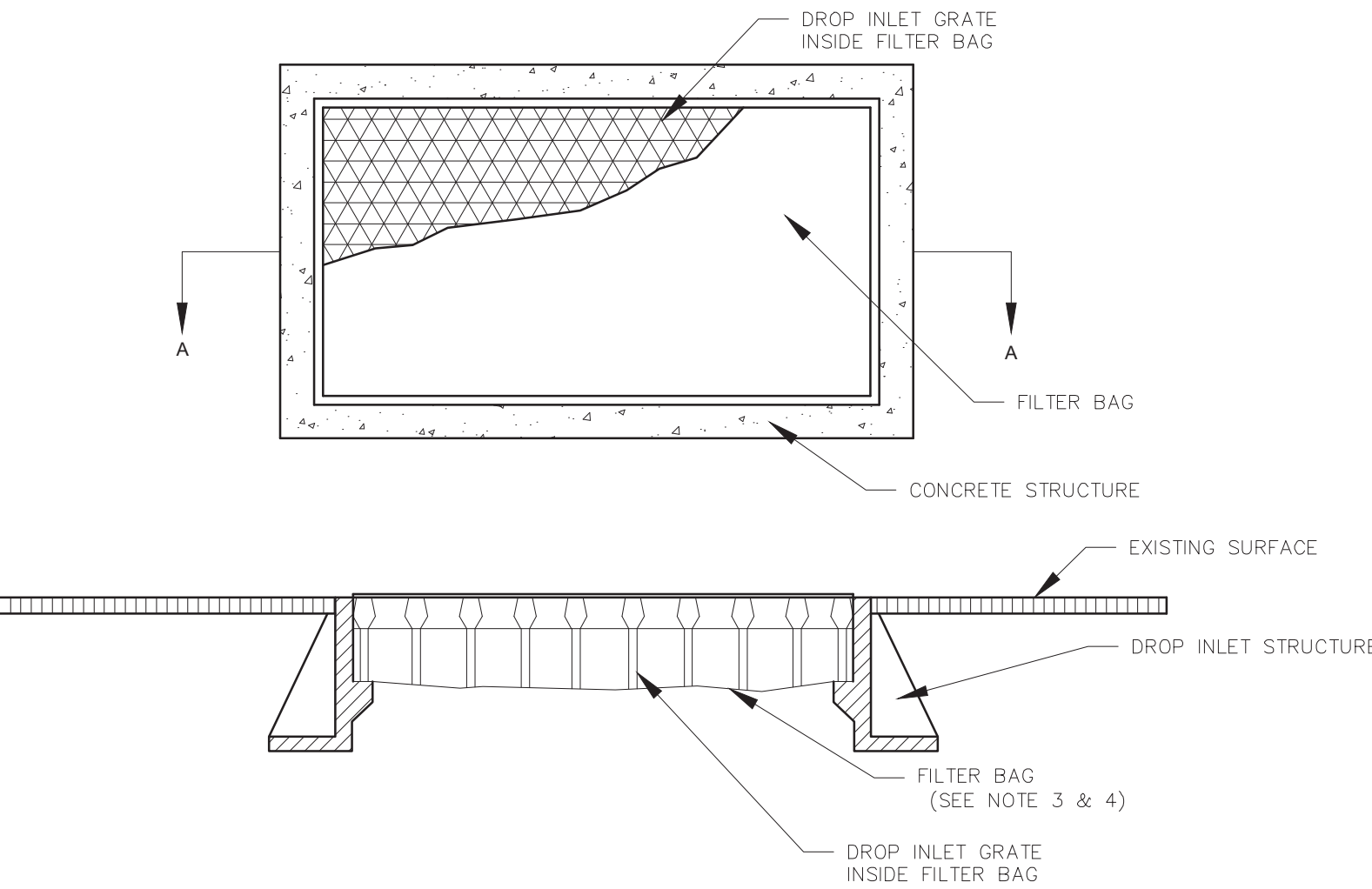
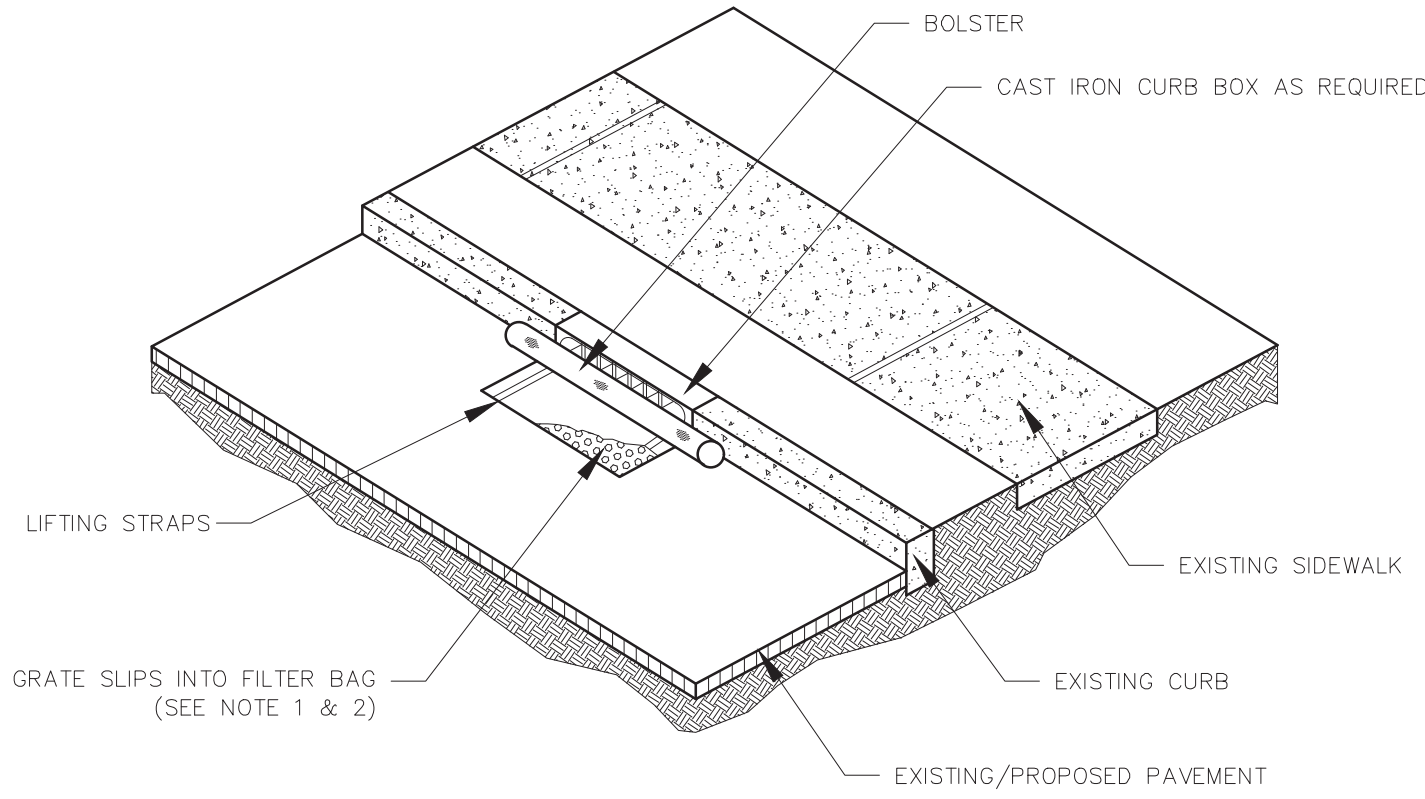
EROSION CONTROL NOTES

1. A - EXISTING VEGETATION TO REMAIN SHALL BE PROTECTED AND REMAIN UNDISTURBED. B - SEDIMENT SHALL BE TRAPPED ON-SITE.
2. SPECIFIC METHODS AND MATERIALS EMPLOYED IN THE INSTALLATION AND MAINTENANCE OF EROSION CONTROL MEASURES SHALL CONFORM TO THE NEW YORK GUIDELINES FOR EROSION AND SEDIMENT CONTROL, LATEST EDITION.
3. SEDIMENT BARRIERS SHALL BE INSTALLED AS REQUIRED ALONG LIMITS OF DISTURBANCE FOR THE DURATION OF THE WORK. NO SEDIMENT FROM THE SITE SHALL BE PERMITTED TO WASH ON TO ADJACENT PROPERTIES, WETLANDS OR ROADS.
4. GRADED AND STRIPPED AREAS AND STOCKPILES SHALL BE KEPT STABILIZED THROUGH THE USE OF TEMPORARY SEEDING AS REQUIRED. SEED MIXTURE SHALL BE IN ACCORDANCE WITH SOIL CONSERVATION SERVICE RECOMMENDATIONS.
5. DRAINAGE INLETS SHALL BE PROTECTED FROM SEDIMENT BUILD-UP THROUGH THE USE OF SEDIMENT BARRIERS, SEDIMENT TRAPS, ETC., AS REQUIRED.
6. INSPECTION AND MAINTENANCE OF EROSION CONTROL MEASURES IS TO BE PERFORMED DAILY BY CONTRACTOR AND AFTER HEAVY OR PROLONGED STORMS. MAINTENANCE MEASURES INCLUDE, BUT NOT LIMITED TO, CLEANING OF SEDIMENT BASINS OR TRAPS, CLEANING OR REPAIR OF SEDIMENT BARRIERS, CLEANING AND REPAIR OF BERMS AND DIVERSIONS, AND CLEANING AND REPAIR OF OF INLET PROTECTION.
7. APPROPRIATE MEANS SHALL BE USED TO CONTROL DUST DURING CONSTRUCTION.
8. SEDIMENT BARRIERS AND OTHER EROSION CONTROL MEASURES SHALL REMAIN IN PLACE UNTIL UPLAND DISTURBED AREAS ARE PERMANENTLY STABILIZED. AFTER PERMANENT STABILIZATION, PAVED AREAS SHALL BE CLEANED AND DRAINAGE SYSTEM FLUSHED AS NECESSARY.
9. DURING THE COURSE OF CONSTRUCTION, CERTAIN EROSION AND SEDIMENT CONTROL MEASURES MAY BECOME NECESSARY TO PREVENT THE TRANSPORT OF SEDIMENT TO OFF-SITE AREAS, PONDS, WATER COURSES, DRAINAGE INLETS, RECHARGE BASINS, ETC. ACTUAL EROSION CONTROL MEASURES WILL BE

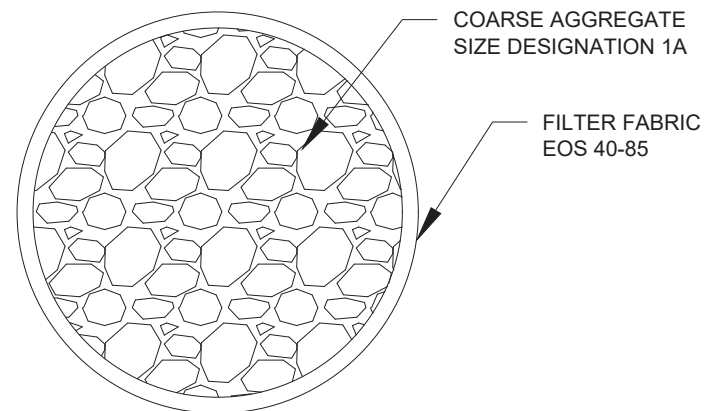
DICTATED BY FIELD CONDITIONS AS CONSTRUCTION PROGRESSES BUT THE GENERAL CONDITIONS IN

IT IS A VIOLATION OF THE PROFESSIONAL LICENSE LAW FOR ANY PERSON TO ALTER THIS DRAWING IN ANY WAY, UNLESS ACTING UNDER THE DIRECTION OF A LICENSED PROFESSIONAL ENGINEER. THE ALTERING CONSULTANT SHALL AFFIX THEIR SEAL AND THE NOTATION "ALTERED BY" FOLLOWED BY THEIR SIGNATURE AND DATE OF ALTERATION.

PRELIMINARY - NOT FOR CONSTRUCTION



SECTION A-A



TYPICAL BOLSTER DETAIL

TEMPORARY SEDIMENT FILTER BAGS

ITEM 209.11

CONSTRUCTION SPECIFICATIONS

1. MAINTENANCE: WITH A STIFF BRISTLE BROOM, SWEEP SILT AND OTHER DEBRIS OFF SURFACE AFTER EACH EVENT.
 2. INSTALLATION:
 - A. STAND GRATE ON END.
 - B. SLIDE THE SILT BAG ON WITH THE DAM ON TOP OF THE GRATE. PULL ALL EXCESS DOWN.
 - C. LAY THE UNIT ON ITS SIDE AND CAREFULLY TUCK THE FLAP IN.
 - D. PRESS THE VELCRO STRIPS TOGETHER.
 - E. INSERT THE UNIT MAKING SURE THE FRONT EDGE OF GRATE IS INSERTED IN THE FRAME FIRST THEN LOWER IT BACK IN PLACE.
 - F. PRESS THE VELCRO DOTS THAT ARE LOCATED UNDER THE LIFTING STRAPS TOGETHER, THIS INSURES THAT THE STRAPS REMAIN FLUSH WITH THE GUTTER.
 3. INSTALLATION:
 - A. STAND GRATE ON END.
 - B. PLACE THE SILT BAG OVER GRATE.
 - C. FLIP THE GRATE OVER SO THAT THE OPEN END IS UP.
 - D. PULL UP THE SLACK AND TUCK THE FLAP IN.
 - E. BE SURE THAT THE END OF THE GRATE IS COMPLETELY COVERED BY THE FLAP OR THE DANDY BAY WILL NOT FIT PROPERLY.
 - F. WHILE HOLDING THE HANDLES, CAREFULLY PLACE DANDY BAG WITH THE GRATE INSERTED INTO THE CATCH BASIN FRAME SO THAT THE RED DOT ON THE TOP OF THE DANDY BAG IS VISIBLE.
- MAINTENANCE: AFTER THE SILT HAS DRIED, REMOVE IT FROM THE SURFACE OF THE SILT BAG WITH A BROOM.
4. PRIOR AND/OR DURING THE COURSE OF CONSTRUCTION, THE CONTRACTOR SHALL COMPLY WITH ALL ADDITIONAL MEASURES DEEMED NECESSARY BY THE ENGINEER AND SHALL BE RESPONSIBLE FOR MAINTAINING ALL EROSION AND SEDIMENT CONTROL DEVICES.
 5. ALL DEBRIS OR EXCESS MATERIALS FROM CONSTRUCTION OF THIS PROJECT SHALL BE IMMEDIATELY AND COMPLETELY REMOVED FROM THE PROJECT AREA.
 6. ALL INLET SEDIMENT CONTROL DEVICES AT EACH LOCATION SHALL BE INSTALLED PRIOR TO COMMENCING ANY PAVEMENT WORK IN THAT LOCATION OR AS OTHERWISE DIRECTED BY THE ENGINEER. THE CONTRACTOR SHALL MAINTAIN ALL SEDIMENT CONTROLS AND REMOVE COLLECTED SEDIMENT ON A WEEKLY BASIS OR AS DIRECTED BY THE ENGINEER. COLLECTED MATERIAL SHALL BE DISPOSED OF PROPERLY TO AN OFF-SITE LOCATION AS DIRECTED BY THE ENGINEER.
 7. ALL SEDIMENT CONTROL DEVICES SHALL BE REMOVED FROM THE SITE AFTER CONSTRUCTION IS COMPLETED.

DUST CONTROL NOTES

DEFINITION

THE CONTROL OF DUST RESULTING FROM LAND-DISTURBING ACTIVITIES.

PURPOSE

TO PREVENT SURFACE AND AIR MOVEMENT OF DUST FROM DISTURBED SOIL SURFACES THAT MAY CAUSE OFF-SITE DAMAGE, HEALTH HAZARDS AND TRAFFIC SAFETY PROBLEMS.

CONDITIONS WHERE PRACTICE APPLIES

ON CONSTRUCTION ROADS, ACCESS POINTS, AND OTHER DISTURBED AREAS SUBJECT TO SURFACE DUST MOVEMENT AND DUST BLOWING WHERE OFF-SITE DAMAGE MAY OCCUR IF DUST IS NOT CONTROLLED.

DESIGN CRITERIA

CONSTRUCTION OPERATIONS SHOULD BE SCHEDULED TO MINIMIZE THE AMOUNT OF AREA DISTURBED AT ONE TIME. BUFFER AREAS OF VEGETATION SHOULD BE LEFT WHERE PRACTICAL. TEMPORARY OR PERMANENT STABILIZATION MEASURES SHOULD BE INSTALLED. NO SPECIFIC DESIGN CRITERIA ARE GIVEN; SEE CONSTRUCTION SPECIFICATIONS BELOW FOR COMMON METHODS OF DUST CONTROL.

WATER QUALITY MUST BE CONSIDERED WHEN MATERIALS ARE SELECTED FOR DUST CONTROL. WHERE THERE IS POTENTIAL FOR THE MATERIAL TO WASH OFF TO A STREAM OR WATER BODY, INGREDIENT INFORMATION MUST BE PROVIDED TO THE LOCAL PERMITTING AUTHORITY.

CONSTRUCTION SPECIFICATIONS

A. NON-DRIVING AREAS - THESE AREAS USE PRODUCTS AND MATERIALS APPLIED OR PLACED ON SOIL SURFACES TO PREVENT AIRBORNE MIGRATION OF SOIL PARTICLES.

VEGETATIVE COVER - FOR DISTURBED AREAS NOT SUBJECT TO TRAFFIC, VEGETATION PROVIDES THE MOST PRACTICAL METHOD OF DUST CONTROL. TEMPORARY SEEDING SHALL BE AS FOLLOWS:

RYE GRASS (ANNUAL OR PERENNIAL) AT 30 LBS. PER ACRE (0.7 LBS./1,000 S.F.)

CERTIFIED "AROOSTOOK" WINTER RYE (CEREAL RYE) AT 100 LBS. PER ACRE (2.5 LBS./S.F.)

USE WINTER RYE IF SEEDING IN OCTOBER / NOVEMBER.

MULCH (INCLUDING GRAVEL MULCH) - MULCH OFFERS A FAST, EFFECTIVE MEANS OF CONTROLLING DUST. THIS CAN ALSO INCLUDE ROLLED EROSION CONTROL BLANKETS.

SPRAY ADHESIVES - THESE ARE PRODUCTS GENERALLY COMPOSED OF POLYMERS IN A LIQUID OR SOLID FORM THAT ARE MIXED WITH WATER TO FORM AN EMULSION THAT IS SPRAYED ON THE SOIL SURFACE WITH TYPICAL HYDROSEEDING EQUIPMENT. THE MIXING RATIOS AND APPLICATION RATES WILL BE IN ACCORDANCE WITH THE MANUFACTURER'S RECOMMENDATIONS FOR THE SPECIFIC SOILS ON THE SITE. IN NO CASE SHOULD THE APPLICATION OF THESE ADHESIVES BE MADE ON WET SOILS OR IF THERE IS A PROBABILITY OF PRECIPITATION WITHIN 48 HOURS OF ITS PROPOSED USE. MATERIAL SAFETY DATA SHEETS WILL BE PROVIDED TO ALL APPLICATORS AND OTHERS WORKING WITH THE MATERIAL.

EXAMPLES OF SPRAY ADHESIVES FOR USE ON MINERAL SOILS ARE SHOWN IN THE FOLLOWING TABLE.

MATERIAL	WATER DILUTION	TYPE OF NOZZLE	APPLY GALLONS ACRE
ACRYLIC POLYMER	9:1	COURSE SPRAY	500
LATEX EMULSION	12.5:1	FINE SPRAY	235
RESIN IN WATER	4:1	FINE SPRAY	300

B. DRIVING AREAS - THESE AREAS UTILIZE WATER, POLYMER EMULSIONS AND BARRIERS TO PREVENT DUST MOVEMENT FROM THE TRAFFIC SURFACE INTO THE AIR.

SPRINKLING - THIS SITE MAY BE SPRAYED UNTIL THE SURFACE IS WET. THIS IS ESPECIALLY EFFECTIVE ON HAUL ROADS AND ACCESS ROUTES.

POLYMER ADDITIVES - THESE POLYMERS ARE MIXED WITH WATER AND APPLIED TO THE DRIVING SURFACE BY A WATER TRUCK WITH A GRAVITY FEED DRIP BAR, SPRAY BAR OR AUTOMATED DISTRIBUTOR TRUCK. THE MIXING RATIOS AND APPLICATION RATES WILL BE IN ACCORDANCE WITH THE MANUFACTURER'S RECOMMENDATIONS. INCORPORATION OF THE EMULSION INTO THE SOIL WILL BE DONE TO THE APPROPRIATE DEPTH BASED ON EXPECTED TRAFFIC. COMPACTION AFTER INCORPORATION WILL BE BY VIBRATORY ROLLER TO A MINIMUM OF 95%. THE PREPARED SURFACE SHALL BE MOIST AND NO APPLICATION OF THE POLYMER WILL BE MADE IF THERE IS A PROBABILITY OF PRECIPITATION WITHIN 48 HOURS OF ITS PROPOSED USE. MATERIAL SAFETY DATA SHEETS WILL BE PROVIDED TO ALL APPLICATORS WORKING WITH THE MATERIAL.

BARRIERS - WOVEN GEOTEXTILES CAN BE PLACED ON THE DRIVING SURFACE TO EFFECTIVELY REDUCE DUST THROW AND PARTICLE MIGRATION ON HAUL ROADS. STONE CAN ALSO BE USED FOR CONSTRUCTION ROADS FOR EFFECTIVE DUST CONTROL.

WINDBREAK - A SILT FENCE OR SIMILAR BARRIER CAN CONTROL AIR CURRENTS AT INTERVALS EQUAL TO TEN TIMES THE BARRIER HEIGHT. PRESERVE EXISTING WIND BARRIER VEGETATION AS MUCH AS PRACTICAL.

MAINTENANCE

MAINTAIN DUST CONTROL MEASURES THROUGH DRY WEATHER PERIODS UNTIL ALL DISTURBED AREAS ARE STABILIZED.

APPROVED WITH
CORRECTIONS AS NOTED
PSEG Long Island

THIS APPROVAL SHALL NOT RELIEVE
THE CONTRACTOR FROM ENTIRE
RESPONSIBILITY FOR DIMENSIONAL
ACCURACY, CONFORMANCE WITH
REFERENCED SPECIFICATIONS, CODES
AND ALL LIABILITY UNDER CONTRACT.

PER: _____
DATE: _____

TEMP.
NO. 11-11

Long Island Power Authority
SUFFOLK COUNTY, NY
VILLAGE OF SOUTHAMPTON
138-KV TRANSMISSION LINE

SOUTHAMPTON TO DEERFIELD
138-KV UNDERGROUND TRANSMISSION
UG PLAN AND INDEX COVER SHEET

PSEG LONG ISLAND
175 East Old Country Road
Hicksville, New York

SCALE
NONE

REVISION
NO.

DRAWING NO.
UG-1000

SHEET NO.
DET-1

REVISION
000

SYSTEM
AND NUMBER

CORRECT NO.
FOLDER NO.

A

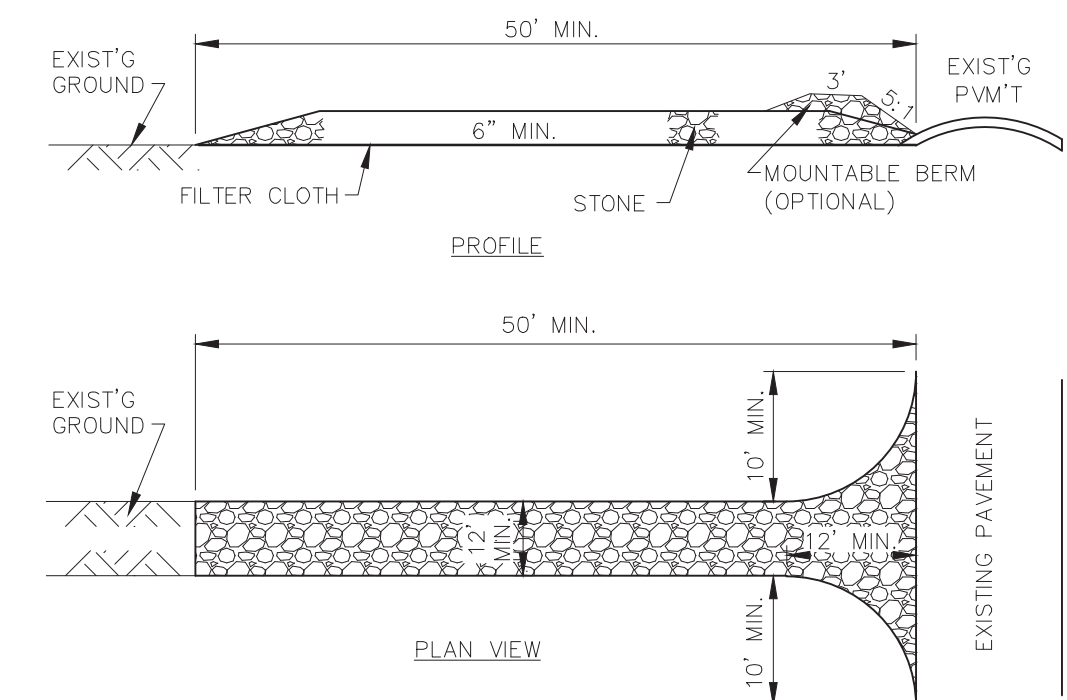
B

C

D

E

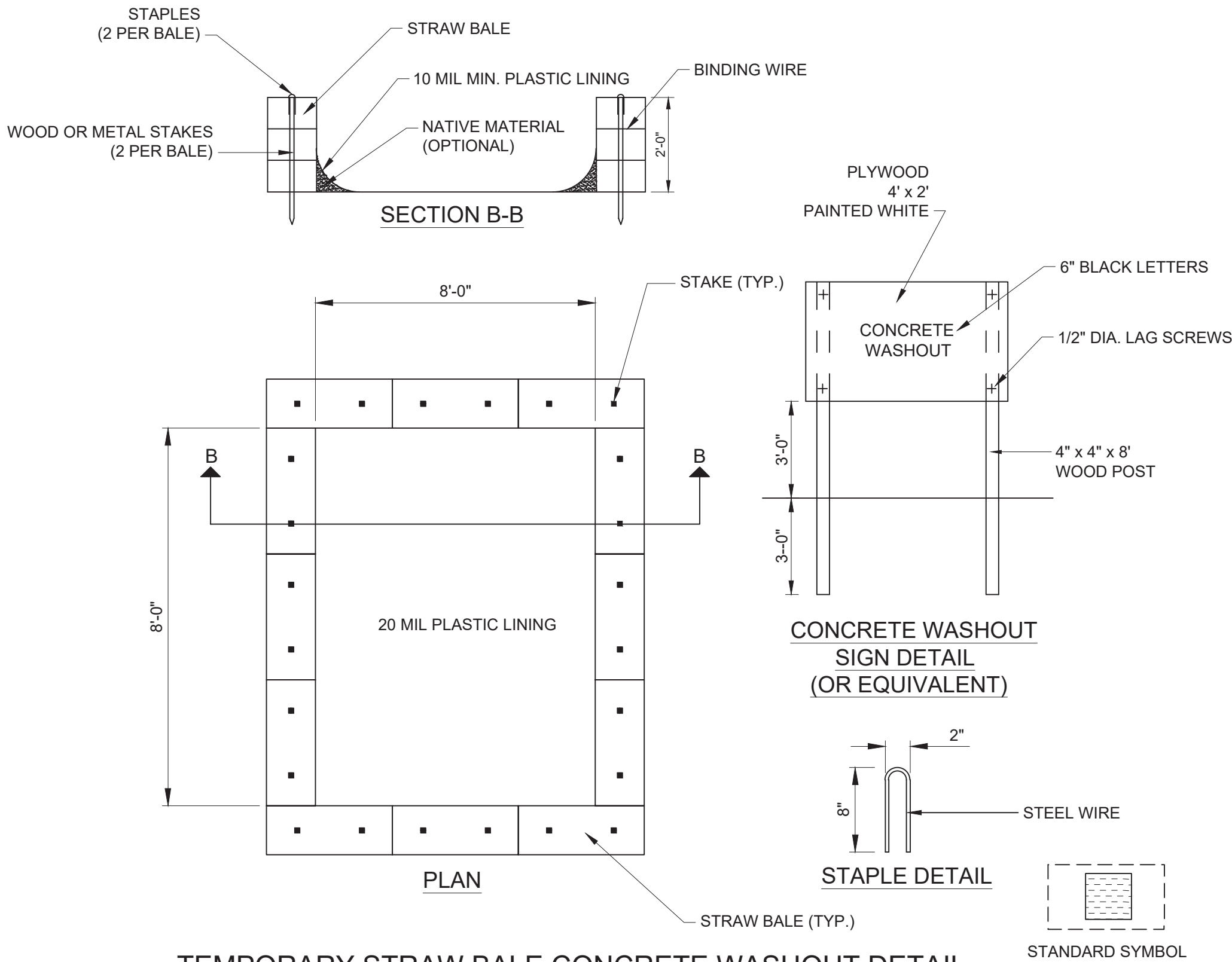
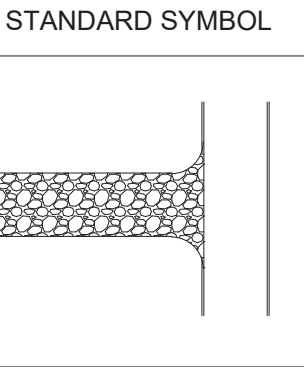
F



STABILIZED CONSTRUCTION ACCESS DRIVEWAY
NOT TO SCALE
ITEM 209.22

CONSTRUCTION NOTES:

- STONE SIZE - USE 1-4" STONE, OR RECLAIMED OR RECYCLED CONCRETE EQUIVALENT.
- LENGTH - NOT LESS THAN 50 FEET (EXCEPT ON A SINGLE RESIDENCE LOT WHERE A 30 FOOT MINIMUM LENGTH WOULD APPLY)
- THICKNESS - NOT LESS THAN SIX (6) INCHES.
- WIDTH TWELVE (12) FOOT MINIMUM, BUT NOT LESS THAN THE FULL WIDTH AT POINTS WHERE INGRESS OR EGRESS OCCURS. TWENTY-FOUR (24) FOOT IF SINGLE ENTRANCE TO SITE.
- GEOTEXTILE - WILL BE PLACED OVER THE ENTIRE AREA PRIOR TO PLACING OF STONE.
- SURFACE WATER - ALL SURFACE WATER FLOWING OR DIVERTED TOWARD CONSTRUCTION ACCESS SHALL BE PIPED BENEATH THE ENTRANCE. IF PIPING IS IMPRACTICAL, A MOUNTABLE BERM WITH 5:1 SLOPES WILL BE PERMITTED.
- MAINTENANCE - THE ENTRANCE SHALL BE MAINTAINED IN A CONDITION WHICH WILL PREVENT TRACKING OR FLOWING OF SEDIMENT ONTO PUBLIC RIGHTS-OF-WAY. ALL SEDIMENT SPILLED, DROPPED, WASHED OR TRACTED ONTO PUBLIC RIGHTS-OF-WAY MUST BE REMOVED IMMEDIATELY.
- WHEN WASHING IS REQUIRED, IT SHALL BE DONE ON AN AREA STABILIZED WITH STONE AND WHICH DRAINS INTO AN APPROVED SEDIMENT TRAPPING DEVICE.
- PERIODIC INSPECTION AND NEEDED MAINTENANCE SHALL BE PROVIDED AFTER EACH RAIN.



TEMPORARY STRAW BALE CONCRETE WASHOUT DETAIL
NOT TO SCALE

NOTES:

- WASHOUT AREA SHALL BE A MINIMUM OF 100' FROM STORM DRAIN INLETS, OPEN DRAINAGE FACILITIES AND WATER COURSES.
- PREVENT SURFACE WATER FROM ENTERING THE STRUCTURE. EXCESS RAINWATER ACCUMULATES OVER HARDENED CONCRETE SHALL BE PUMPED TO AN APPROVED STABILIZED AREA.
- ONCE CONCRETE WASTES ARE WASHED INTO DESIGNATED AREAS, ALLOWED TO HARDEN, AND FILL 75% OF SURFACE CAPACITY, THE CONCRETE SHOULD BE BROKEN UP, REMOVED AND DISPOSED OF IN ACCORDANCE WITH ALL LOCAL, COUNTY, AND STATE REGULATIONS. THE CONCRETE WASHOUT SIGN SHALL BE INSTALLED WITHIN 20' OF TEMPORARY WASHOUT FACILITY.
- WASHOUT FACILITY SHALL BE INSPECTED DAILY.
- THE PLASTIC LINER SHALL BE REPLACED WITH EACH CLEANING OF THE WASHOUT FACILITY.

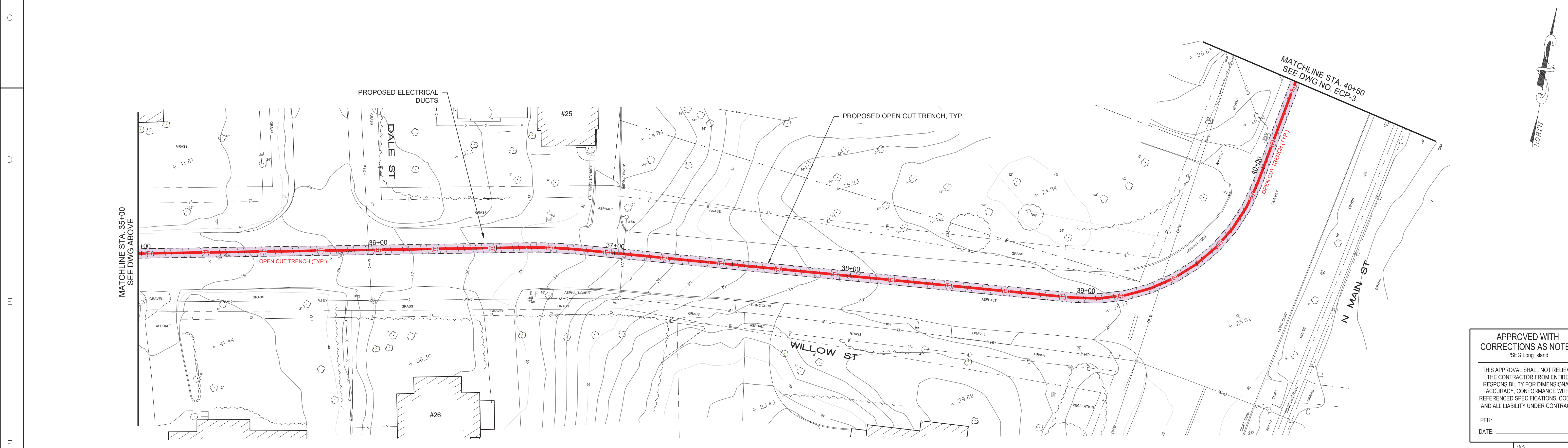
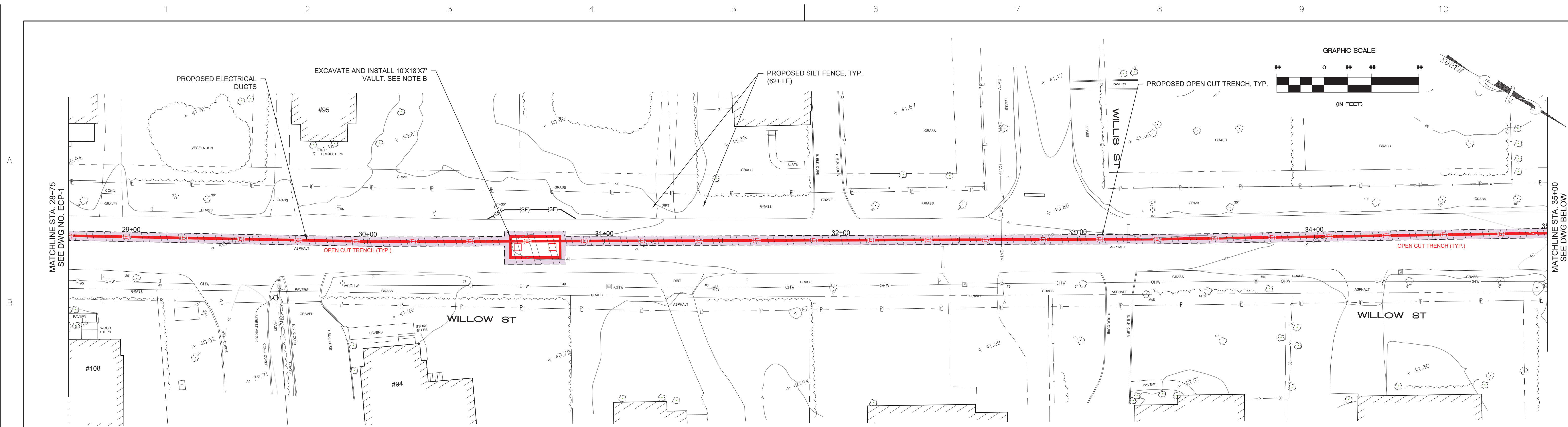
IT IS A VIOLATION OF THE PROFESSIONAL LICENSE LAW FOR ANY PERSON TO ALTER THIS DRAWING IN ANY WAY, UNLESS ACTING UNDER THE DIRECTION OF A LICENSED PROFESSIONAL ENGINEER. THE ALTERING CONSULTANT SHALL AFFIX THEIR SEAL AND THE NOTATION "ALTERED BY" FOLLOWED BY THEIR SIGNATURE AND DATE OF ALTERATION.

PRELIMINARY - NOT
FOR CONSTRUCTION

NELSON•POPE
engineers • architects • surveyors
175 East Old Country Road
Hicksville, New York 11801
Tel: 516.433.8200 Fax: 516.433.8201
www.nelsonpopeng.com

												Long Island Power Authority SUFFOLK COUNTY, NY VILLAGE OF SOUTHAMPTON 138-KV TRANSMISSION LINE			
								SOUTHAMPTON TO DEERFIELD 138-KV UNDERGROUND TRANSMISSION UG PLAN AND INDEX COVER SHEET				 PSEG LONG ISLAND 175 East Old Country Road Hicksville, New York			
								SCALE NONE				VENDOR SHEET NO.			
								DRAWING NO. UG-1000				DET-2			
								SYSTEM GRID NUMBER				SHEET NO. 000			





LEGEND:

	PROPOSED CONCRETE WASHOUT		PROPOSED OPEN CUT TRENCH
	PROPOSED ELECTRIC SPICE VAULT		LIMIT OF IMPERIOUS DISTURBANCE
	PROPOSED SILT FENCE		LIMIT OF PERMEABLE DISTURBANCE
	PROPOSED ELECTRICAL DUCTS		LIMIT OF CLEARING + GRUBBING TREE REMOVAL (PERMANENT)
	ALIGNMENT		LIMIT OF CLEARING + GRUBBING (TEMPORARY)
	APPROXIMATE RIGHT-OF-WAY (ROW)		
	FILTER BAG (INLET PROTECTION)		

IT IS A VIOLATION OF THE PROFESSIONAL LICENSE LAW FOR ANY PERSON TO ALTER THIS DRAWING IN ANY WAY, UNLESS ACTING UNDER THE DIRECTION OF A LICENSED PROFESSIONAL ENGINEER. THE ALTERING CONSULTANT SHALL AFFIX THEIR SEAL AND THE NOTATION "ALTERED BY" FOLLOWED BY THEIR SIGNATURE AND DATE OF ALTERATION.

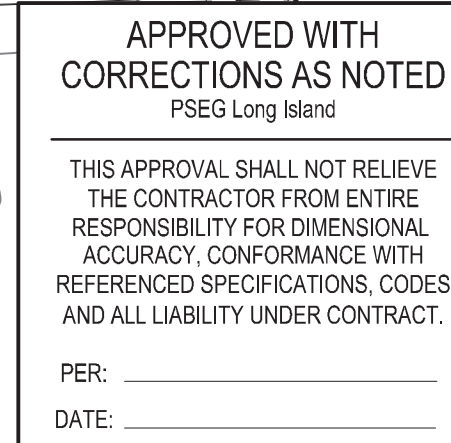
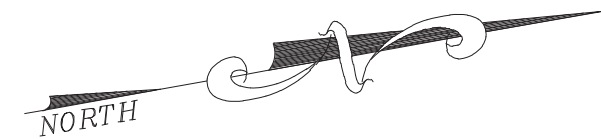
RESTORATION NOTES

NOTE A
RESTORE DISTURBED AREA WITH TOPSOIL AND SEED

NOTE B
TEMPORARY ASPHALT RESTORATION AND FINAL ASPHALT RESTORATION

PRELIMINARY - NOT FOR CONSTRUCTION

		Long Island Power Authority SUFFOLK COUNTY, NY VILLAGE OF SOUTHAMPTON 138-KV TRANSMISSION LINE	
		SOUTHAMPTON TO DEERFIELD 138-KV UNDERGROUND TRANSMISSION EROSION CONTROL PLAN - 2	
1 SEPT 2025 REV DATE DESCRIPTION DRAWN REVIEW APPR		SCALE: NONE DRAWING NO. UG-1000 SMART NO. ECP-2 REVISION 000	
PROJECT NO.		CABINET NO. FOLDER NO.	



RESTORATION NOTES

NOTE A
RESTORE DISTURBED AREA WITH TOPSOIL AND SEED

NOTE B
TEMPORARY ASPHALT RESTORATION AND FINAL ASPHALT RESTORATION

PRELIMINARY - NOT FOR CONSTRUCTION

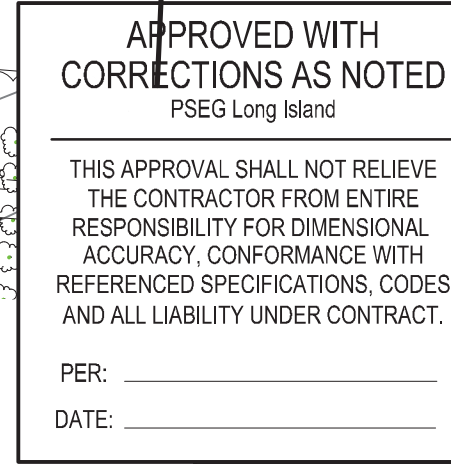
PDT: 250926-16:52 | № 23033 DIR: G:\PROJECTS\23033\DWG\ROADWAY\23033 ECP.DWG ECP-3 | DST: AUTOCAD PDF (GENERAL DOCUMENTATION).PC3 | PST: NAT CAD



IT IS A VIOLATION OF THE PROFESSIONAL LICENSE LAW FOR ANY PERSON TO ALTER THIS DRAWING IN ANY WAY, UNLESS ACTING UNDER THE DIRECTION OF A LICENSED PROFESSIONAL ENGINEER. THE ALTERING CONSULTANT SHALL AFFIX THEIR SEAL AND THE NOTATION "ALTERED BY" FOLLOWED BY THEIR SIGNATURE AND DATE OF ALTERATION.

PRELIMINARY - NOT
FOR CONSTRUCTION

PDT: 250926-16:53 | № 23033 DIR: G:\PROJECTS\23033\DWG\ROADWAY\23033 ECP.DWG ECP-5 | DST: AUTOCAD PDF (GENERAL DOCUMENTATION).PC3 | PST: NAT CAD.



RESTORATION NOTES

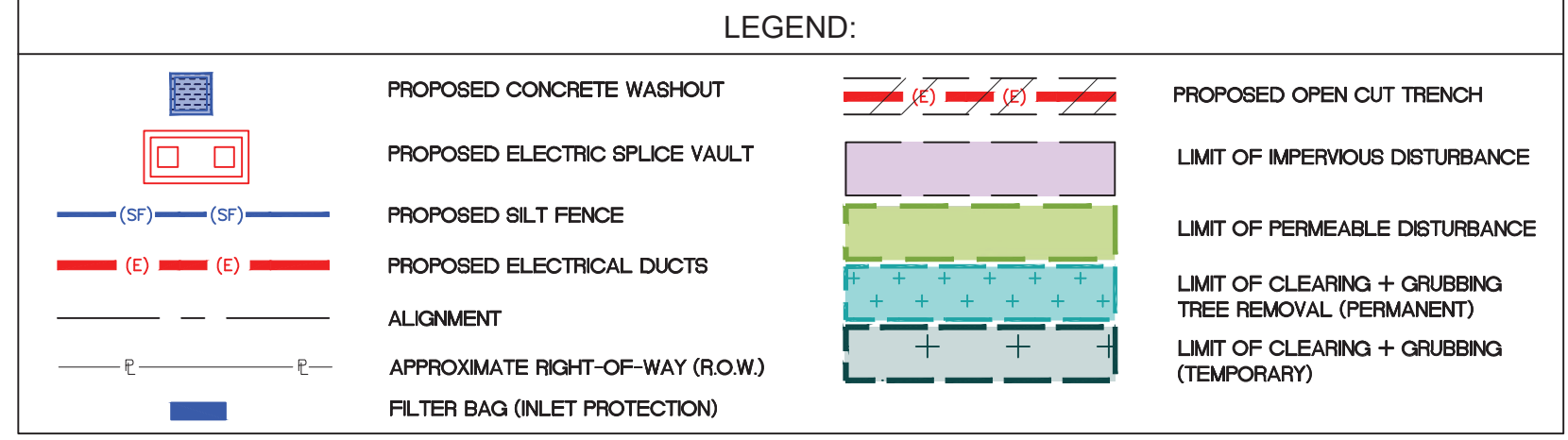
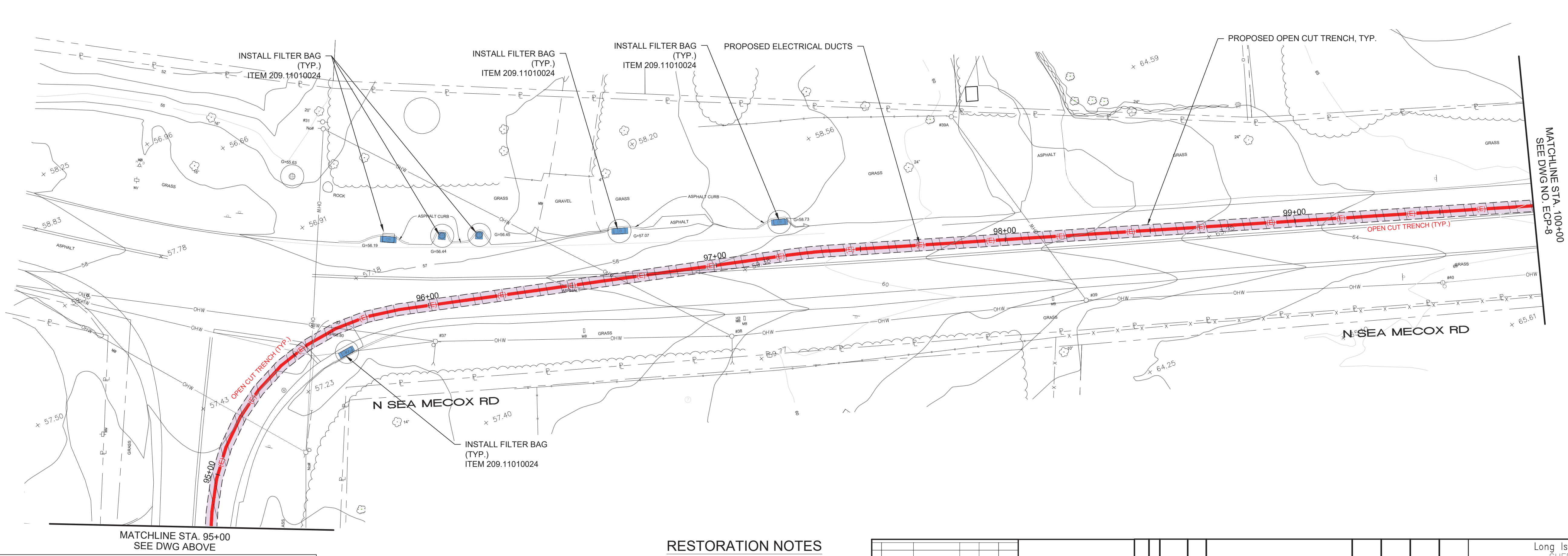
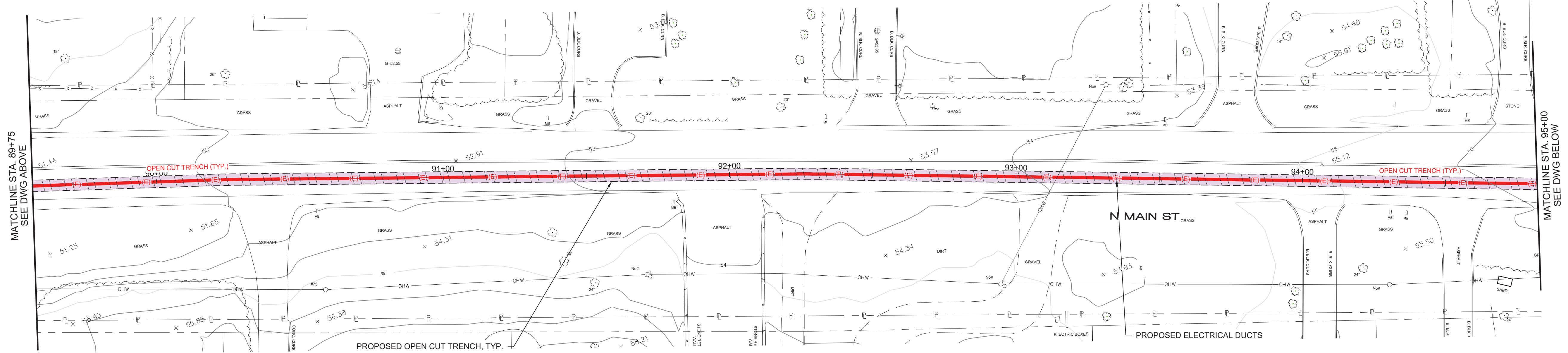
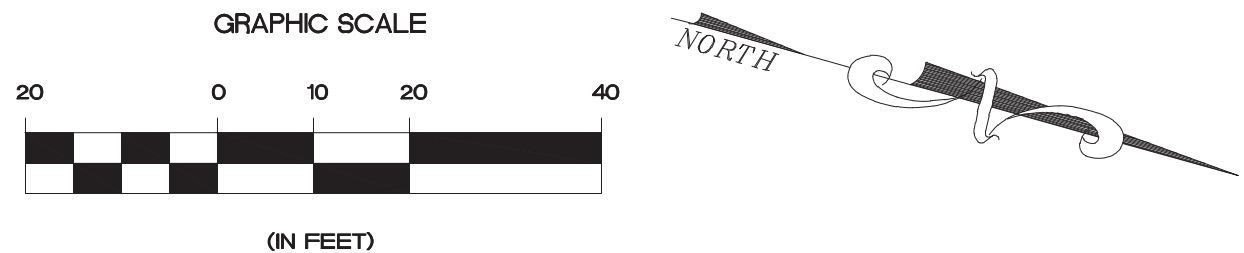
NOTE A
RESTORE DISTURBED AREA WITH TOPSOIL AND SEED

NOTE B
TEMPORARY ASPHALT RESTORATION AND FINAL ASPHALT RESTORATION

PRELIMINARY - NOT FOR CONSTRUCTION

<div><div><p>NELSON + POPE engineers • architects • surveyors <small>INCORPORATED 1986 • 201 WEST 42ND STREET NEW YORK, NY 10018</small></p></div><div><p>PROJ. NO.</p></div><div><p>ISSUE</p></div></div>										<div style="text-align: right; margin-bottom: 10px;">NO. _____</div> <div style="text-align: center;"><p>LONG ISLAND POWER AUTHORITY SUFFOLK COUNTY, NY VILLAGE OF SOUTHAMPTON 138-KV TRANSMISSION LINE</p></div>									
										<p>SOUTHAMPTON TO DEERFIELD 138-KV UNDERGROUND TRANSMISSION EROSION CONTROL PLAN – 6</p>									
										<p>PSEG LONG ISLAND <small>175 East Old Country Road Hicksville, New York</small></p>									
										<p>SCALE NONE</p>					<p>VENDOR DWS, NO.</p>				
<p>DRAWING NO. UG-1000</p>					<p>SMART NO. ECP-6</p>					<p>000</p>									
<p>SYSTEM GRID NUMBER</p>										<p>CABINET NO. FOLDER NO.</p>									

A
B
C
D
E
F



RESTORATION NOTES

NOTE A
RESTORE DISTURBED AREA WITH TOPSOIL AND SEED

NOTE B
TEMPORARY ASPHALT RESTORATION AND FINAL ASPHALT RESTORATION

PRELIMINARY - NOT
FOR CONSTRUCTION

IT IS A VIOLATION OF THE PROFESSIONAL LICENSE LAW FOR ANY PERSON TO ALTER THIS DRAWING IN ANY WAY, UNLESS ACTING UNDER THE DIRECTION OF A LICENSED PROFESSIONAL ENGINEER. THE ALTERING CONSULTANT SHALL AFFIX THEIR SEAL AND THE NOTATION "ALTERED BY" FOLLOWED BY THEIR SIGNATURE AND DATE OF ALTERATION.

APPROVED WITH
CORRECTIONS AS NOTED

PSEG Long Island

THIS APPROVAL SHALL NOT RELIEVE THE CONTRACTOR FROM ENTIRE RESPONSIBILITY FOR DIMENSIONAL ACCURACY, CONFORMANCE WITH REFERENCED SPECIFICATIONS, CODES AND ALL LIABILITY UNDER CONTRACT.

PER: _____

DATE: _____

Long Island Power Authority SUFFOLK COUNTY, NY VILLAGE OF SOUTHAMPTON 138-KV TRANSMISSION LINE				SOUTHAMPTON TO DEERFIELD 138-KV UNDERGROUND TRANSMISSION EROSION CONTROL PLAN - 7			
PSEG LONG ISLAND 175 East Old Country Road Hicksville, New York				SCALE: NONE			
DRAWING NO. UG-1000				REVISION 000			
SYSTEM GRID NUMBER				CABINET NO.			

NO.	DATE	W.D.	DESCRIPTION	OWN BY	CHK BY	REVIEWED	APPRO
1	SEPT. 2025	PRR DENT'S 9/25/25	ISSUED FOR CONSTRUCTION	BC	UF	BC	BC

1	SEPT. 2025	PRR DENT'S 9/25/25	DSO	RRM	---	---	---
REV	DATE	DESCRIPTION	DRAWN	REVIEW	APPR	PROJ. NO.	---

NELSON+POPE engineers • architects • surveyors 100 West 10th Street, 10th Floor New York, NY 10011-4209 Tel: 212-692-4000 Fax: 212-692-4001 www.nelsonpopeny.com		LONG ISLAND POWER AUTHORITY SUFFOLK COUNTY, NY VILLAGE OF SOUTHAMPTON 138-KV TRANSMISSION LINE	
--	--	---	--